



CONTOUR WHEELS



CWG
Ø 152 x 34 mm, Ø 6" x 1 5/16"

COPPER

- CWG Ø 152 x 34 mm, AH 60 mm
- CW Ø 102 x 38 mm, AH 14 mm
- CW Ø 76 x 38 mm, AH 14 mm or 3/8"
- CW Ø 76 x 32 mm, AH 14 mm
- CW Ø 76 x 25 mm, AH 14 mm or 3/8"
- CW Ø 65 x 13 mm, AH 3/8"
- CW Ø 50 x 25 mm, AH 3/8" x 24 thread
- CW Ø 40 x 20 mm, AH 3/8" x 24 thread
- CW Ø 30 x 15 mm, AH 3/8" x 24 thread

- Ø 6" x 1 5/16" Art. No: 132012-xx
- Ø 4" x 1 1/2" Art. No: 132004-xx
- Ø 3" x 1 1/2" Art. No: 132009-xx
- Ø 3" x 1 1/4" Art. No: 132003-xx
- Ø 3" x 1" Art. No: 132010-xx
- Ø 2 9/16" x 1/2" Art. No: 132002-xx
- Ø 2" x 1" Art. No: 132001-xx
- Ø 1 9/16" x 13/16" Art. No: 132007-xx
- Ø 1 3/16" x 19/32" Art. No: 132000-xx



CWC
Ø 130 x 32 mm, Ø 5" x 1 1/4"



Copper Carbide Design



Hubflange Kit
Art. No. 132315



CW
Ø 102 x 38 mm, Ø 4" x 1 1/2"



Example of Application



CW
Ø 76 x 38 mm, Ø 3" x 1 1/2"



CW
Ø 76 x 32 mm, Ø 3" x 1 1/4"



CW
Ø 65 x 13 mm, Ø 2 9/16" x 1/2"



CW
Ø 50 x 25 mm, Ø 2" x 1"



CW
Ø 30 x 15 mm, Ø 1 3/16" x 19/32"



CW
Ø 76 x 25 mm, Ø 3" x 1"

INSIST ON THE ORIGINAL!

WWW.BJ-ROCKET.COM



CONTOUR WHEELS



CWP
Ø 225 x 50 mm, Ø 9" x 2"



CWP
Ø 200 x 38 mm, Ø 8" x 1 1/2"



CWCP
Ø 200 x 25 mm, Ø 8" x 1"



CWP
Ø 180 x 34 mm, Ø 7" x 1 5/16"



CWGP
Ø 152 x 34 mm, Ø 6" x 1 5/16"



CWP
Ø 102 x 38 mm, Ø 4" x 1 1/2"

PATRIOT

- CWP Ø 225 x 50 mm, AH 60 mm
- CWP Ø 225 x 38 mm, AH 60 mm
- CWP Ø 200 x 38 mm, AH 60 mm
- CWCP Ø 200 x 25 mm, AH 60 mm
- CWP Ø 180 x 34 mm, AH 60 mm
- CWP Ø 170 x 34 mm, AH 60 mm
- CWGP Ø 152 x 34 mm, AH 60 mm
- CWCP Ø 130 x 32 mm, AH 25 mm
- CWP Ø 102 x 38 mm, AH 14 mm
- CWP Ø 76 x 32 mm, AH 14 mm
- CWP Ø 65 x 25 mm, AH 3/8"
- CWP Ø 50 x 25 mm, AH 3/8" x 24 thread

- Ø 9" x 2" Art. No: 132291-xx
- Ø 9" x 1 1/2" Art. No: 132293-xx
- Ø 8" x 1 1/2" Art. No: 132297-xx
- Ø 8" x 1" Art. No: 132292-xx
- Ø 7" x 1 5/16" Art. No: 132289-xx
- Ø 6 11/16" x 1 5/16" Art. No: 132294-xx
- Ø 6" x 1 5/16" Art. No: 132290-xx
- Ø 5" x 1 1/4" Art. No: 132288-xx
- Ø 4" x 1 1/2" Art. No: 132285-xx
- Ø 3" x 1 1/4" Art. No: 132286-xx
- Ø 2 9/16" x 1" Art. No: 132284-xx
- Ø 2" x 1" Art. No: 132287-xx



Patriot Design

Reusable Adaptor Kits for Wheels 150 mm and above. Arbor hole, Keyway as per specification. When ordering Hubflange Kit with Dust Cover please use the tool article number with DC instead of -xx. Example: Hubflange Kit for CWP Ø 225 x 38 mm: Art. No: 132293-DC



Hubflange Kit
Art. No. 132315



Hubflange Kit with Dust Cover



CONTOUR WHEELS

STEEL SHOT GRIT

CW 102 x 38 mm, AH 14 mm	Ø 4" x 1 1/2"	Grit 230/390	Art. No: 932002-xxx
CW 102 x 38 mm, AH 3/4"	Ø 4" x 1 1/2"	Grit 230/390	Art. No: 932002-U-xxx
CW 76 x 32 mm, AH 14 mm	Ø 3" x 1 1/4"	Grit 170/230/390	Art. No: 932003-xxx
CW 65 x 25 mm, AH 3/8"	Ø 2 9/16" x 1"	Grit 170/230/390	Art. No: 932007-xxx
CW 50 x 25 mm, AH 3/8" x 24 thread	Ø 2" x 1"	Grit 170/230/390	Art. No: 932001-xxx
CW 50 x 20 mm, AH 3/8" x 24 thread	Ø 2" x 3/4"	Grit 170/230	Art. No: 932008-xxx
CW 45 x 20 mm, AH 3/8" x 24 thread	Ø 1 3/4" x 3/4"	Grit 170/230/390	Art. No: 932000-xxx



Note: When ordering, please replace the -xxx in the Art. No. with the desired Grit No. Example: CW 102 x 38 mm with Grit 230 - Art. No: 932002-230



Steel Shot Grit Design



CW
102 x 38 mm
Ø 4" x 1 1/2"

CW
76 x 32 mm
Ø 3" x 1 1/4"

CW
65 x 25 mm
Ø 2 9/16" x 1"

CW
50 x 25 mm
Ø 2" x 1"

CW
50 x 20 mm
Ø 2" x 3/4"

CW
45 x 20 mm
Ø 1 3/4" x 3/4"



CWSP
Ø 225 x 38 mm, Ø 9" x 1 1/2"

SUPER PATRIOT

CWSP Ø 225 x 38 AH 60 mm	Ø 9" x 1 1/2"	Art. No: 133293-xx
CWSP Ø 200 x 25 AH 60 mm	Ø 8" x 1"	Art. No: 133292-xx
CWSP Ø 180 x 34 AH 60 mm	Ø 7" x 1 5/16"	Art. No: 133289-xx
CWSP Ø 102 x 38 AH 14 mm	Ø 4" x 1 1/2"	Art. No: 133285-xx
CWSP Ø 76 x 32 mm, AH 14 mm	Ø 3" x 1 1/4"	Art. No: 133286-xx
CWSP Ø 50 x 25 mm, AH 3/8" x 24 thread	Ø 2" x 1"	Art. No: 133287-xx



Super Patriot Design



Hubflange Kit
Art. No. 132315



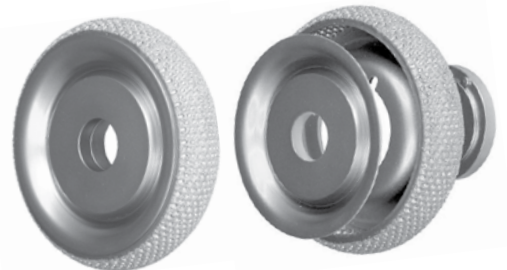
CWSP
Ø 200 x 25 mm, Ø 8" x 1"



CWSP
Ø 76 x 32 mm, Ø 3" x 1 1/4"



CWSP
Ø 50 x 25 mm, Ø 2" x 1"



Hubflange Kit with Dust Cover

INSIST ON THE ORIGINAL!

WWW.BJ-ROCKET.COM