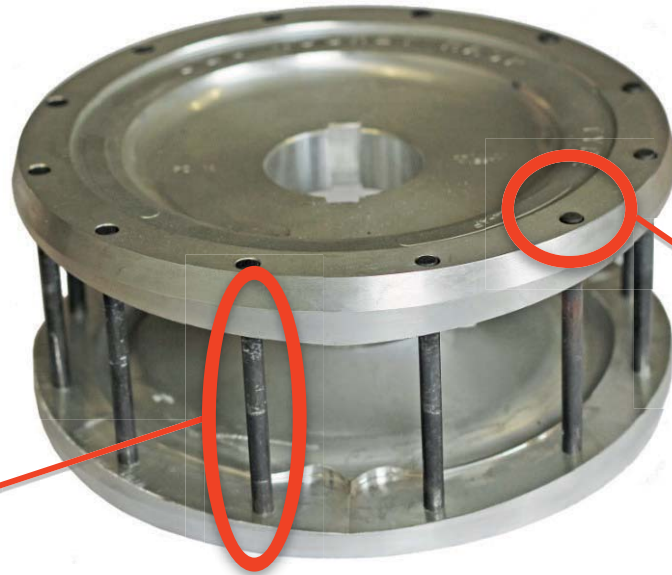


# Replacement Guide for Pins, Spacers and Hubs



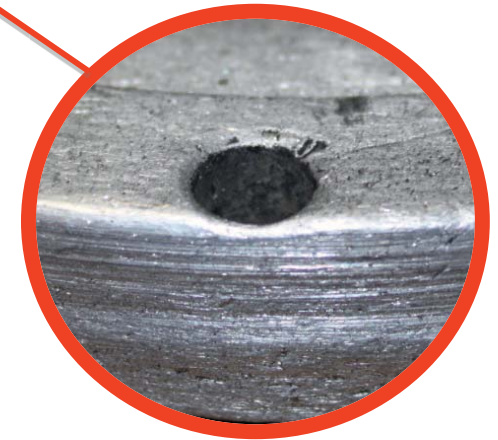
## Pins should be replaced when:

- Worn, bent, or cut
- Deep grooves from blade refills



## Hubs should be replaced when:

- Insufficient material outside the pinholes
- Pinholes worn from loose pins



## Spacers should be replaced when:

- Uneven thickness of spacers
- Rubber dust built up/clogged on spacers
- Visible damage, cracks

